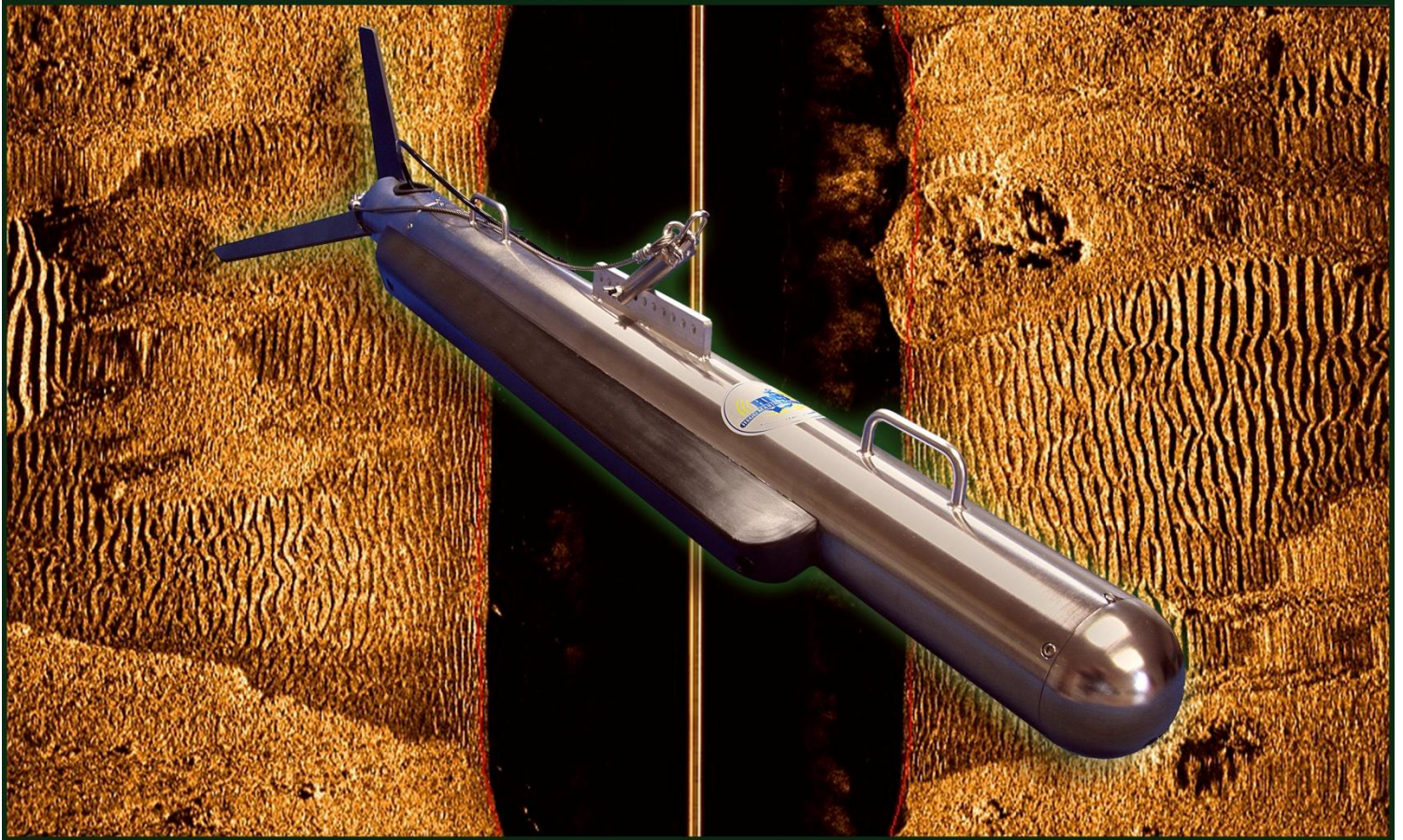


## Dual Frequency CHIRP Side Scan Sonar System



### FEATURES/BENEFITS

- *Dual Simultaneous 100/400 KHz Frequency Operation*
- *Industry Standard Ethernet Interface for Data, Control, and Processing*
- *DSL Over Coax Tow Vehicle Data Interface*
- *Compatible with Industry Standard Survey Software*
- *CHIRP and CW modes*
- *Stainless Steel Tow Fish*
- *Heading, Pitch, & Roll Sensors (Depth Optional)*
- *Two Serial Input Ports to Enable integration of a Magnetometer or other external sensors*

*The Falmouth Scientific HMS-624 Side Scan Sonar System utilizes advanced technology to provide superior imaging capabilities for deep and shallow water applications.*

*The Tow Fish electronics incorporate FSI's CHIRPceiver™ 24-bit CHIRP signal processing along with dual simultaneous 100/400 KHz operation which results in very high resolution side scan data at towing depths up to 2,000 meters.*

*The Topside Power/Data Multiplexer Interface is packaged in a standard 2U 19" rack mount enclosure and provides a 4Mb/s DSL connection for the Tow Fish, and a standard Ethernet connection for the data processor interface.*

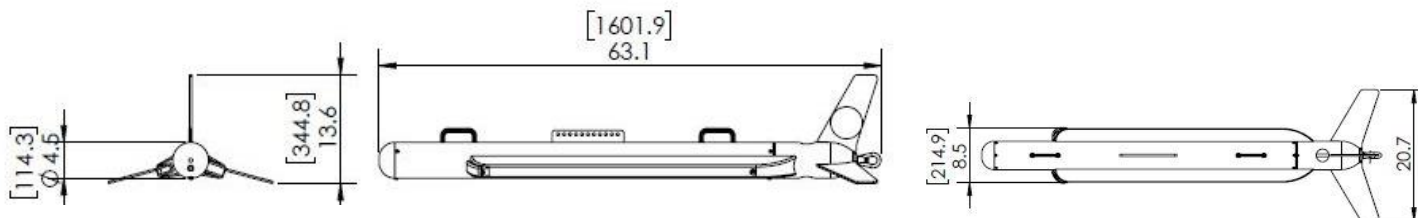
*The HMS-624 uses a flexible control interface connected via Ethernet that allows the user to set operating parameters such as CHIRP/CW modes, pulse length, range, and gain.*

*The system is compatible with third-party Software packages such as OIC GeoDAS, Triton ISIS, and others.*

# SPECIFICATIONS

## HMS-624 Side Scan Sonar System Specifications

<i>System Operating Specifications</i>	
Operation Frequency	100 KHz, 400 KHz simultaneous; other frequencies available by request
Signal Type	Chirp or CW User selectable
Operating Range	100 KHz – 600 meters per side 400 KHz – 200 meters per side
Horizontal Beam Width	100 KHz – 1.0 degrees - 400 KHz – 0.3 degrees
Vertical Beam Width	60 degrees
Depression Angle	Fixed 20 degrees tilted down
Resolution Across Track	100 KHz – 8cm - 400 KHz – 2cm
Standard Sensor	Heading, Pitch, Roll
Optional Sensor	Depth
Serial Inputs for External Sensors	Two serial inputs for external sensors such as a Magnetometer, CTD, etc.; 12 or 24 VDC Sensor Power
<i>Tow Vehicle Mechanical Specifications</i>	
Material	316 Stainless Steel
Diameter	12.7 cm (5 inches)
Length	152.4 cm (60 inches)
Weight in air/saltwater	~ 55 Kg/41 Kg (120 lbs/90 lbs)
Operating Depth	2,000 meters
<i>Topside Power/Data Multiplexer Interface Specifications</i>	
Enclosure type	2U 19" rack mount
Power Input	115/230 VAC, 50/60 Hz
Tow vehicle power supply rating	300 VDC @ 2 AMPS
Tow vehicle data interface	DSL, up to 4 Mb/s
Sonar Processor data interface	Ethernet
Tow Cable Type	Coaxial
Tow Cable Lengths	Up to 6,000 meters, depending on cable diameter



Specifications subject to change without notice

January 27, 2017